



Leading the future human beings.

SEMYUNG

ELECTRIC MACHINERY CO., LTD.



The philosophy and value of semyung will be the greatest driving force in creating success myths.

CONTENTS

CEO's Message	04-05
Company History	06-07
Business Classification	08-17
:: Transmission Line Fittings & Accessories	
:: Distribution Line and OPGW Fittings & Accessories	
:: Electric Railway Fittings & Accessories	
:: Tricot & Raschel Beams	
:: Nonferrous metal Casting & Forging and Production Facilities	
R&D, Quality Assurance and Testing Equipment	18-19



CEO's Message

Since our establishment in 1962, we, SEMYUNG, have contributed a great deal to the industry development of domestic-foreign countries. We manufactured the fittings of transmission and distribution lines, railway fittings, and also automobile parts, and were in charge of the construction of both the domestic electric power Network and the KTX high-speed railway project. We would like to say that our staff and employees' continuous efforts in research development and quality improvement have made this possible. Our human education technology development and management ideology centering on customer satisfaction will, substantially further our company's progress and continue to create increasing demand for our products. We will make a firm foundation in the area of material industry with the know-how of casting, forging, and processing parts that we have acquired during our company's operation.

And so, our staff and employees promise to make our best efforts to make our company the best, top-level company, and also to commit to making a better environment on the earth.

Thank you for your kind cooperation and deep support. We hope you will share your guidance and advice with us in the future.



CEO Chul Hyun, Kwon



CHANGWON FACTORY (창원공장)

MIEUM FACTORY (미음공장)

HEAD OFFICE & FACTORY (본사 및 공장)

1960' ~

- 1962. 08 Founded SEMYUNG Electric commercial firm in Busan
- 1969. 01 Developed hardware for 154kV transmission line

1980' ~

- 1983. 03 Contracted the license agreement of Spacer Damper with Brush Power Equipment Limited in U.K
- 1984.01 Conversion of corporation 'SEMYUNG Electric Machinery Co.,Ltd'
- 1984. 07 Developed Tower fittings and String set for 345kV transmission line
- 1985. 08 Developed Spacer Damper for 345kV transmission line
- 1987. 07 Developed electrical railway accessories with TUNNEL BRACKET
- 1988. 04 Developed Surge Tank for automobile
- 1988. 08 Constructed 2nd factory in Changwon(AL forging and AL autocasting factory)
- 1989. 09 Contracted the Technology agreement of 30" Tricot & Rachel Beam with WASHI BEAM Co.,Ltd

1990' ~

- 1991. 12 Developed Tricot & Rachel Beams 21", 30" and 40" for textile machinery
- 1992. 01 Listed on the KOSDAQ stock market
- 1994. 11 Developed tensioning device of 3ton and Spring Type Tensioning device for railway
- 1995. 12 Contracted the Technology agreement for electrical hardwares and accessories with SAMWA TEKKI Co.,Ltd in Japan
- 1995. 12 Acquired Certification of ISO 9001
- 1999. 02 Developed & Supplied the Fittings through participation in KTX
- 1999. 03 Developed Tower fittings and String set for 765kV transmission line

2000' ~

- 2000. 12 Developed Boltless Type Spacer Damper for transmission line (Auto Locking Devices, patent in Japan No.3273160)
- 2001. 11 Received Presidential Award on 38th Trade Day (US Dollars 3 Million Export)
- 2002. 12 Acquired CE Certification (Tricot & Rachel Beams for textile machinery)
- 2004. 06 Constructed an Electric Technology Laboratory (No.20041815)
- 2004. 07 Developed V-String Insulator Set for 765kV transmission line
- 2004. 12 Developed Hold on Swing a Jumper Support String for 154kV transmission line
- 2005. 03 Developed Forging Disks & Rims for Automobiles
- 2005. 08 Developed Quadruple Spacer Damper for 345kV transmission line(INNO-BIZ by SMBA)
- 2006. 12 Developed Grip type OPGW Fittings

2010' ~

- 2010. 03 Developed Boltless Type Spacer Damper for 6-Bundle
- 2010. 04 Acquired Single PPM Quality Assurance for Compression Dead End Clamp (SMBA No. 1-02-3-1777)
- 2010. 12 Appointed the Cooperated Business Company for Electrical & Accessories in the Project of Future High Speed Railway (KRS)
- 2011. 02 Appointed the Localized Business Company for Electrical & Accessories in the High Speed Railway (KRNA)
- 2012. 10 Developed the Electrical & Accessories in the High Speed Railway
- 2013. 06 Appointed the Export Promise by SMBA Busan-Ulsan No. 13-58
- 2015. 07 Developed Arrestor Device for 345kV transmission line
- 2015. 07 Developed Cako 250 type Free Brackets
- 2015. 12 Received Presidential Award on 52th Trade Day (US Dollars 5 Million Export)
- 2016. 12 Accomplished the Supply Record in 5 continents (Asia, Europe, Africa, S.America, N.America)
- 2017. 05 Developed Boltless type Bundle Spacer
- 2018. 04 Equiped Completion of self-anodizing facilities
- 2019. 04 Selected as a Time-honored Business(SMBA)

Transmission Line Fittings & Accessories



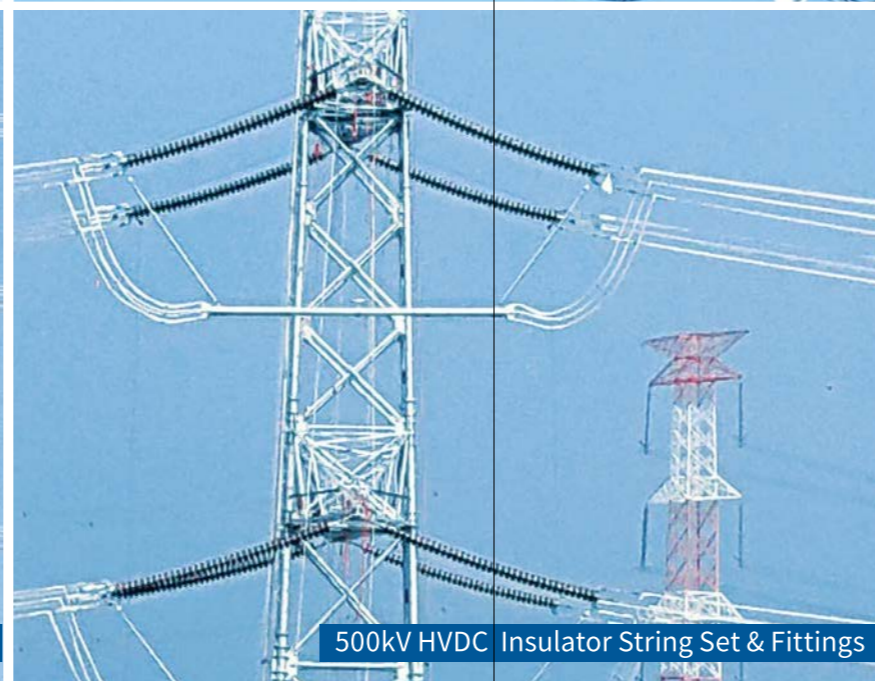
154kV Insulator String Set & Fittings



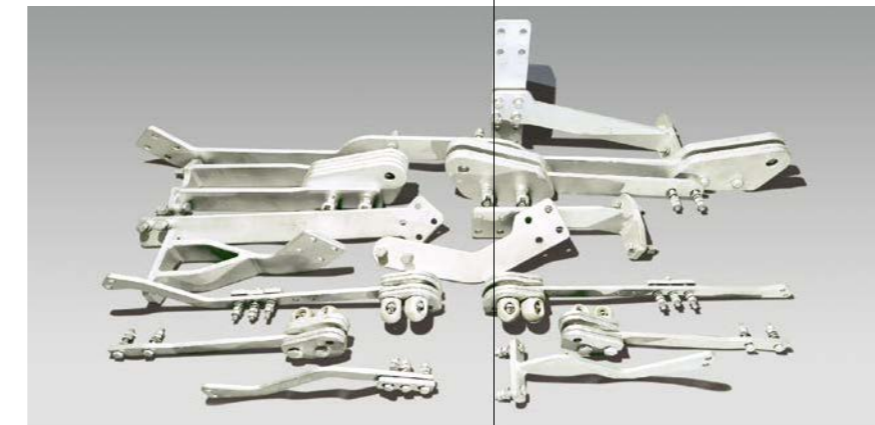
345kV Insulator String Set & Fittings



765kV Insulator String Set & Fittings



500kV HVDC Insulator String Set & Fittings



154kV / 345kV Arrestor Device

In the short history of the domestic electric power industry, we have made great technological advances. We developed electric transmission fittings such as 154kV, 345kV, 765kV, 500kV HVDC and substituted localization. We contributed a great deal to the construction of an electric power net and to national facilities development. In addition to the above, we succeeded in the development of the Boltless Spacer Damper and special area insulator fittings. Further, we are doing our best to develop new, high quality electric power transmission products.



Tower Fittings

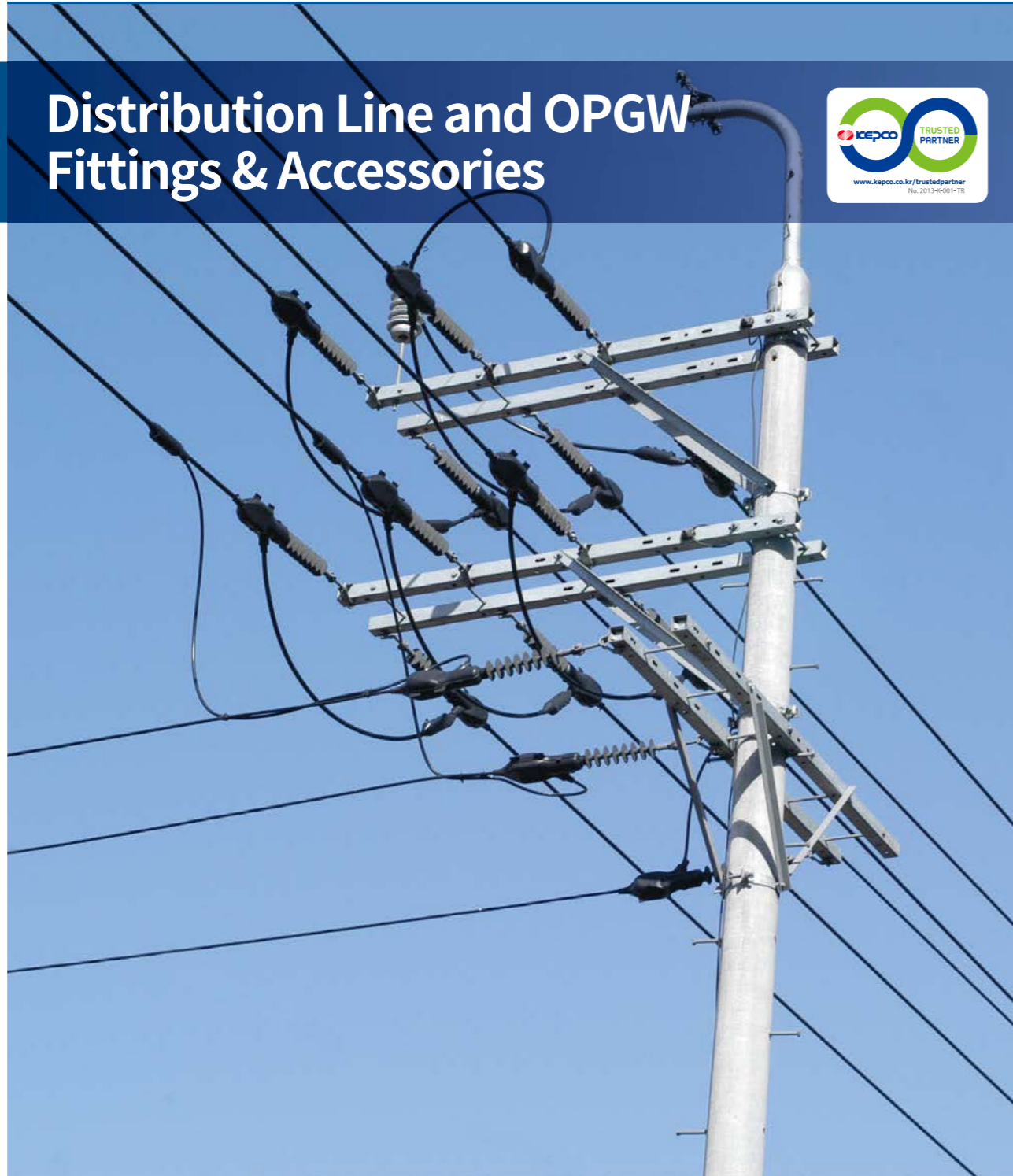


LSCC Fittings



Spacers & Spacer Dampers

Distribution Line and OPGW Fittings & Accessories



OPGW Tension Set

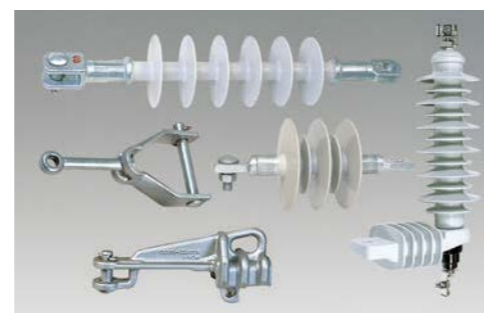
We have been doing our best at producing superior quality overhead fittings and electric instruments for the smooth supply of electric power, an indispensable energy source for industrial activity and daily life. We will make the utmost efforts to increase the quality of GRIP type fittings for OPGW(Optical Fiber Ground Wire) production. That market extends from the domestic to the overseas markets. We will concentrate our energies on continuous research development in order to produce superior goods that are highly safe and have quality construction.



Ground Clamp & Fittings



Wedge Type Al. Dead End Clamps



Polymer Arrester, Insulators & Fittings



OPGW Fittings & Accessories

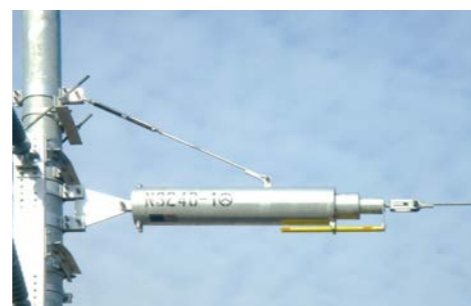


OPGW Suspension Set

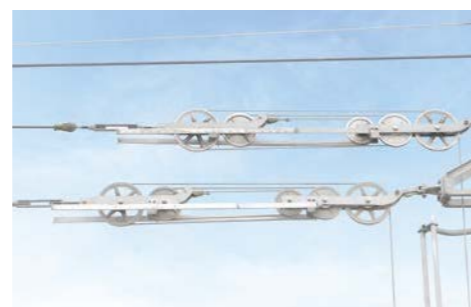
Electric Railway Fittings & Accessories



We will do our best to produce and supply catenary fittings and connection fittings for high speeds of up to 400km/hr. These will include fittings for subways, the mass transportation constructed in Seoul and five(5) major metropolitan cities. We will make the greatest endeavor through our continuous research and development to produce high quality products, and finally, we will contribute to the development of the railroad industry.



Spring Type Tensioning Device



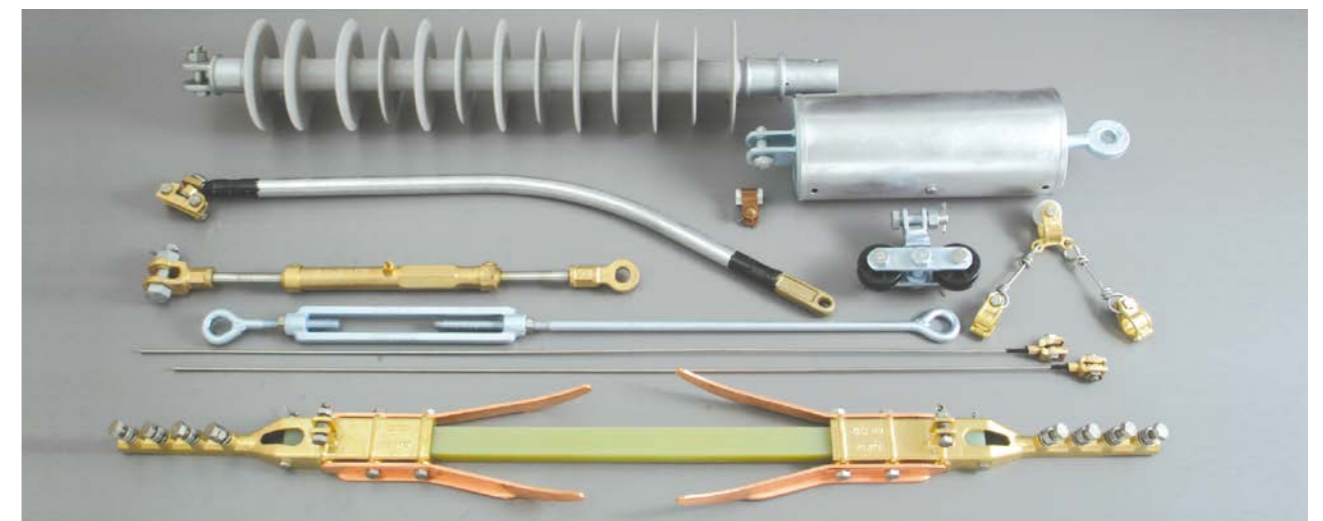
Pulley Type Tensioning Device



Steady Arms



Pulley type Auto-Tension Balancers



Fittings for Railway



Fittings for High Speed Railway

Tricot & Raschel Beams



Production Process



FORGING

Forged Flange made by our technically superior 4000Ton hydraulic screw forging press.



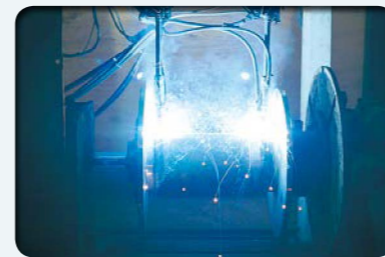
HEAT-TREATMENT

Quenching & Tempering(T-6) of flanges and barrels using the newest heat treatment furnace.



MACHINING

Precise machining for flange and barrel by vertical CNC lathe machines.



WELDING

Completed welding by the most modern Automatic Welding System.



FINAL MACHINING

Perfect machining by high grade CNC lathe machine.



BALANCING

Keeping up balancing dynamically measured by Digital Balancer.



ANODIZING

Hard-Anodizing treatment for protection against corrosion and damage.

SEMYUNG BEAMS have been fully expanded to include huge hydraulic screw presses (4000/2500/1600ton) and the latest processing equipment, thereby contributing to the development of the textile industry by supplying high-quality products to yarn makers and textile companies at competitive prices and expanding our overseas markets.



Quality Assurance

ANALYSIS

- Chemical composition analysis and quality material control by the emission spectrometer.



MEASURED

- Precise measuring and quality management by three dimensional measurement machine.
- Rigorous tolerance management of all beams by precision gauges & tools.
- Maintenance of dynamic balancing measured by the most modern balancing equipment.
- Rigorous process management in hard-anodizing.



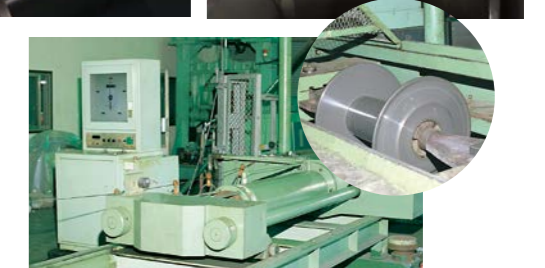
INSPECTED

- Measurement & Inspection of thickness, roughness and hardness after anodizing



TESTED

- By 250Ton horizontal universal testing machine.
 - Loading test of flanges and beams.
 - Compression strength test of beams.
 - Tensile strength test of welding part.
- Determination of highest safety warping yarns measured by bending diagram.



Nonferrous metal Casting & Forging and Production Facilities



Based on our expertise in casting and forging, our non-ferrous castings and forgings, which are produced with the latest facilities, have been recognized for their superior quality and spread widely in domestic and abroad.



Copper Castings



Aluminum Castings



Low Arm (Forgings)



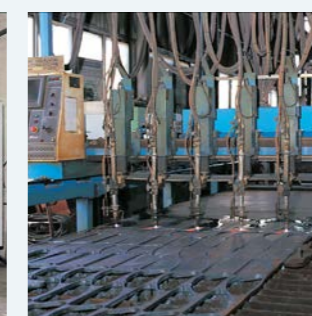
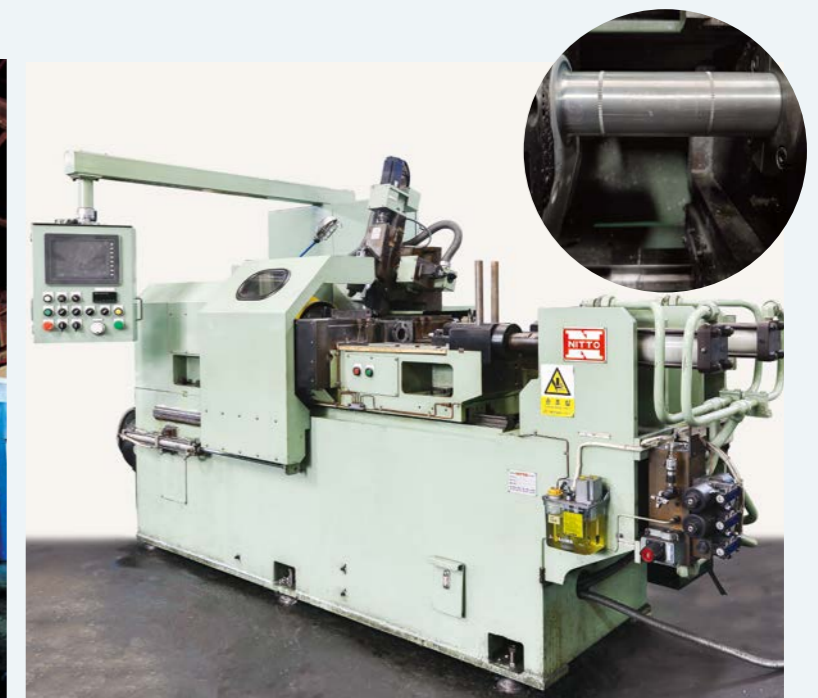
Forged Disk



Wheel Disk



Forging Wheels & Rims



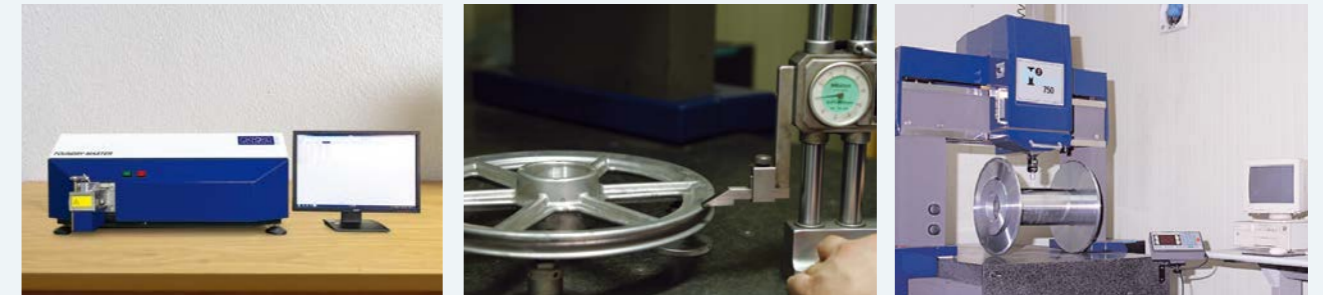
SEMYUNG, which creates high-quality production system with challenging and creative passion and belief to create new technology in the 21st century, realizes customer's impressions with cutting-edge facilities and accumulated production technology.

Production Facilities

- Hydraulic screw presses (4,000ton/2,500ton/1,600ton)
- Auto friction welding machine
- Gravity casting machine line
- CNC lathe
- CNC gas cutting machine
- Mold processing machine
- Horizontal machine line
- Crank press 400ton



Our strict quality assurance system meets the requirements of the world standard, and we are doing our best to realize customer impressions with continuous technology development.



Testing Equipment

- Emission spectrometer
- High gauge
- 3D measuring instrument system
- High low temperature fatigue tester
- Impulse voltage test system
- Elapse of year change tester
- Horizontal type tensile testing machine
- Vibration test bed
(vertical & longitudinal, sub-span oscillation)
- X-ray penetration test system
- Fatigue tester
- Withstanding voltage tester



HEAD OFFICE & FACTORY

188, Daedong-ro, Sasang-gu, Busan, Korea.
T. +82-51-316-6886~90 F. +82-51-324-3995

SEOUL OFFICE

RM 712 LG TWINTEL, 508, Samsung-ro, Gangnam-gu, Seoul, Korea.
T. +82-2-555-4111~2 F. +82-2-555-1431

CHANGWON FACTORY

654-11, Wungham-ro, Seongsan-gu, Changwon, Kyoungnam, Korea.
T. +82-55-285-9832~4 F. +82-55-281-3273

www.semyung-elec.com



世明電機工業株式會社
SEMYUNG ELECTRIC MACHINERY CO., LTD.